

December 2017

# ClassNK

## ARRIVAL CHECKLIST for Port State Control



## Introduction

This checklist is based on a statistical analysis and investigation of the deficiencies pointed out by Port State Control officers onboard ships classed by NK.

To minimize the risk of your ship being detained by PSC, the checklist should be used by the vessel's crew prior to arrival into port. The items identified in this checklist focus on areas where deficiencies that have often resulted in PSC detention.

If any of the items identified in this checklist are not in good working condition, the crew should take appropriate steps to rectify the deficiencies noted prior to arrival into port. The checklist is organized according to distinct areas onboard ship for easy reference.

Please note that this checklist is an arrival checklist for port state control. Accordingly, it only covers select items as described above. A more detailed checklist (GOOD MAINTENANCE ON BOARD SHIPS etc. available for download from the [NK website](#)) should be used for routine onboard maintenance programs.

In consideration of more convenience for the users, this checklist has been prepared with smartphone app. Please download the app on your smartphone and use it, as well.

For iOS users



For Android users



- iOS is a trademark or registered trademark of Cisco in the U.S. and other countries and is used under license.
- App Store is a service mark of Apple Inc..
- Android and Google Play are trademarks of Google Inc.

## Table of Contents (TOC)

<a href="#">Documents</a>	(9 items)
<a href="#">Bridge</a>	(13 items)
<a href="#">Accommodations</a>	(13 items)
<a href="#">Outside of Accommodations</a>	(6 items)
<a href="#">Survival Craft &amp; Launching Arrangements</a>	(8 items)
<a href="#">Steering Gear Room (incl. Emergency Fire Pump)</a>	(3 items)
<a href="#">Deck Area</a>	(15 items)
<a href="#">Engine Room</a>	(18 items)
<a href="#">Other Spaces</a>	(5 items)

## Documents

**Crew Certificates**

Are valid crew certificates kept onboard?

- Crew certificates (STCW) and the Flag administration's endorsements
- Medical certificates

**Manuals**

Are the appropriate manuals and booklets onboard and up-to-date, as applicable, including training manuals, trim and stability booklet, loading manual, cargo securing manual, ship structural access manual, SOPEP, SEEMP, grain loading manual, damage control plan, maintenance manuals, and oil record book, etc.?

**Continuous Synopsis Record (CSR)**

Is the CSR up-to-date and kept onboard?

**Contracts, Records, Certificates Issued by Service Suppliers**

Are documents for navigation/GMDSS equipment, fire safety systems, and life saving appliances kept onboard?

**Safe Manning Document**

Is the minimum safe manning certificate provided onboard and the actual number of crew confirmed?

**Ship Certificates**

Are the original certificates onboard and properly endorsed?

**Seafarers' Employment Agreement (SEA)**

Are SEAs for all seafarers valid? Are copies of SEAs signed by both the seafarer and the ship-owner or ship owner's representative provided to all seafarers? In case the SEA is not in English, is an English translation of the SEA attached? Where a collective bargaining agreement (CBA) forms all or part of the SEA, is the CBA on board the ship with relevant provisions in English?

**Work & Rest Hours**

Are records of daily hours of work and rest available and properly maintained, corresponding to the log book, endorsed by the Master or a person authorized by the Master? Are copies of records provided to all seafarers? Do work hours not exceed the prescribed maximum number of work hours? In case hours of rest are divided into two periods, is one of rest period at least six hours long?

**Payment of Wages**

Do all seafarers receive their wages in full accordance with their employment agreements at no greater than monthly intervals? Are all seafarers given a monthly account of the payments due and the amounts paid, including wages, any additional payments, and any rate of exchange used, if applicable?

[Back to TOC](#)

## Bridge

**BNWAS**

Is the equipment working satisfactorily? Are security means protected so that access to the controls is restricted to the Master only?

[See additional info...\(p.15\)](#)

**Charts**

Are original charts and/or ECDIS up-to-date? Is the last edition of Notice to Mariners kept onboard?

**EPIRB / AIS / VDR / Echo Sounder / Radar Transponder (SART) / VHF**

Is the equipment in good working order? Are the batteries operational and in date?

**Fire Detection**

Is the fire alarm and fire detection system in good working order?

[See additional info...\(p.15\)](#)

**GMDSS**

Can the crew operate the MF/HF radio installation using both AC and DC power?

**Lifejackets and Immersion Suits**

Are lifejackets and immersion suits in good condition? Are all lifejackets equipped with properly working lights and whistles?

**Lifebuoys**

Are quick release arrangements for self-activating smoke signals and self-igniting lights attached to lifebuoys in good working condition? Is the buoyant smoke signal in date?

**Lights / Shapes / Sound-signals**

Are the daylight signal lamp, emergency lights, and navigation lights in good working condition? Are the navigation lights (Mast lights, Side lights, Stern light, Anchor light and Not under command light) properly fitted at the required angular sectors, as shown in the drawing of navigation lights arrangement?

[See additional info...\(p.16\)](#)

**Line-throwing appliances / Distress flares**

Is all equipment in satisfactory condition with expiry dates?

**Logbooks**

Are ship drills (abandon ship, fire, steering, enclosed space entry), weekly/monthly tests and proper maintenance all recorded in the applicable logbooks?

**LRIT**

Is the LRIT equipment working properly and satisfactorily? Is the conformance test report issued by the Administration or proper testing ASP kept onboard?

**Magnetic Compass**

Is the magnetic compass adjusted for proper working conditions without any bubbles, and the deviation card updated? Is deviation card kept near the conning position?

**Nautical Publications**

Are the latest nautical publications onboard for ready reference (tide tables, list of lights, list of radio signals, etc.)?

[Back to TOC](#)

## Accommodations

**EEBD**

Is the stowage condition of the EEBDs in good order and proper air pressure maintained?

**Emergency Lighting**

Are the emergency lights in good working condition?

**Fire Doors**

Do the self-closing devices on fire doors work properly without hold-back hooks when self-closing doors are required in accordance with SOLAS requirements?

[See additional info...\(p.16\)](#)

**Fire Control Plan**

Is the fire control plan in place and up-to-date?

**Fire Extinguishers**

Have all fire extinguishers been serviced as required and properly marked with the date of servicing?

**Fire Fighting Equipment**

Are all fireman's outfits in good condition and torches in proper working order? Have all cylinders for breathing apparatuses been properly serviced? Is an onboard means of recharging breathing apparatus or a suitable number of spare cylinders for cylinders used during drills provided properly onboard?

**Fire Protection Materials and Cable Penetrations**

Is the insulation on "A" class bulkheads and decks in good condition? Are cable penetrations in "A" or "B" class divisions in good condition?

[See additional info...\(p.17\)](#)

**Lifejackets and Immersion Suits**

Are lifejackets and immersion suits in good condition? Are all lifejackets equipped with properly working lights and whistles?

**Sanitary Facilities**

(Toilets)

Are flushing of toilets and floor drainages in good order? Are toilets and floors kept clean and in good condition without broken parts or tiles?

(Shower Rooms, Washbasins, Laundry Room)

Are spaces/rooms kept clean, and are facilities (washing machines, clothes dryers, etc.) in good order? Is hot water available for use?



**Ventilation and Heating**

Are air-conditioning systems and ventilation systems in good order?

**Mess rooms, Recreation Room and Crew Cabins**

Are mess rooms, recreation room and crew cabins kept clean without rubbish? Are furnishings and recreational facilities in good condition?

**Galley**

Is the galley kept clean and clear of any rubbish? Are floor tiles kept clean and not broken? Are range hoods and ventilation openings with wire nets kept clean of oil or other residue?

**Food and Catering**

Are adequate quantities and suitable quality of food and water supplied on board? Are cold room temperature and cleanness in good order? Are inspections of the following items conducted at appropriate intervals and recorded?

- Supplies of food and drinking water,
- All spaces and equipment used for the storage and handling of food and drinking water,
- Galley and other equipment for the preparation and the service of meals.

[Back to TOC](#)

## Outside of Accommodations

**Emergency Lighting**

Are all emergency lights in good working condition?

**Fire Dampers**

Are all fire dampers in good working condition and periodically examined internally? Are all damper flaps structurally sound?

[See additional info...\(p.17\)](#)

**Fire Fighting Equipment**

Are all hose boxes, fire hoses, and nozzles in good condition? Do all hydrants operate normally?

[See additional info...\(p.18\)](#)

**Funnel**

Is the funnel in good condition without any signs of corrosion? Is the funnel damper operating properly, and are "Open-Shut" settings clearly marked?

**Lifebuoy**

Are all lifebuoy in good condition?

**Ventilators**

Are external ventilation trunks in good condition without any signs of wastage? Are all "Open-Shut" settings clearly marked?

[See additional info...\(p.18\)](#)

[Back to TOC](#)

## Survival Craft & Launching Arrangements

**Emergency Lighting**

Are all emergency embarkation lights in good working condition?

[See additional info...\(p.19\)](#)

**Embarkation Arrangements for Survival Craft**

Are all embarkation ladders and shackles are in good condition?

**Lifeboats**

Is the lifeboat structure (hull, seats/thwarts, seat belts, flooring, release hook, release gear, retro-reflective tapes) properly maintained with no wastage, corrosion, or damage?

[See additional info...\(p.19\)](#)

**Lifeboat and Liferaft Davits**

Are all davits not corroded and in good working condition? Are all sheaves and loose gear not worn and in good condition? Have all wires been serviced and changed out, as necessary? Are launching instructions clearly posted?

**Lifeboat Engine**

Do all lifeboat engines operate normally (do the engines start within 2 minutes at ambient temperature of -15 degrees) with No.1 & 2 batteries separately?

[See additional info...\(p.20\)](#)

**Lifeboat Inventory**

Is the lifeboat inventory prepared as required and all items not expired?

[See additional info...\(p.20\)](#)

**On-load Release Gear**

***One of top three detainable items by PSC***

Do all on-load release gear operate normally and properly reset? (The instruction manual is to be strictly observed when checking the operation of the release gear.)

[See additional info...\(p.21\)](#)

**Liferafts**

Have all liferafts been serviced by an approved servicing company with proper servicing certificates? Are liferafts properly secured and launching arrangements in good condition with no obstructions to float-free operation?

[Back to TOC](#)

## Steering Gear Room (incl. Emergency Fire Pump)

**Emergency Fire Pump**

*One of top three detainable items by PSC*

Is the emergency fire pump in proper working condition (gauges operational, priming pump functioning, adequate deliver pressure maintained)? Does the isolating valve operate normally?

**Emergency Lighting**

Are all emergency lights in good working condition?

**Steering Gear**

Have the main and emergency steering gear been tested and confirmed to be functioning properly?

[Back to TOC](#)

## Deck Area

**Accommodation ladders and Pilot transfer arrangements**

Are accommodation ladders and Pilot transfer arrangements in good working condition and used properly?

[See additional info...\(p.21\)](#)

**Air Pipes and Ventilators**

Are all air pipes and ventilators in good condition with no corrosion, cracks, or holes? Are disc floats of air pipes and closing devices not damaged or stuck? Are "Open-Shut" settings clearly marked?

[See additional info...\(p.22\)](#)

**Cargo and Other Hatchways**

Are all hatch covers in good condition with securing devices sufficient for their intended purpose and in place? Has it been confirmed that there is no oil leakage from the jack up hydraulic cylinder?

[See additional info...\(p.22\)](#)

**Decks**

Are all decks not corroded, holed, cracked, or buckled?

**Fire Dampers**

Are all fire dampers in good working condition and periodically examined internally? Are all damper flaps structurally sound?

[See additional info...\(p.17\)](#)

**Fire Main**

Has it been confirmed that there is no leakage present or detectable from the fire main without patches while in the running condition?

**Fire Extinguishers**

Have all fire extinguishers been serviced as required and properly marked with the date of servicing?

**Fire Fighting Equipment**

Are all hose boxes, fire hoses, and nozzles in good condition? Are all hydrants operating normally?

[See additional info...\(p.18\)](#)

**Hatch Coamings and Bulwarks**

Has it been confirmed that all hatch coamings and bulwarks are not corroded, holed, cracked, or buckled?

[See additional info...\(p.23\)](#)

 **Lifebuoys**

Are all lifebuoys in good condition?

 **Lifejackets and Immersion Suits**

Are all lifejackets and immersion suits in the bosn's store in good condition? Are all lifejackets equipped with properly working lights and whistles?

 **Navigation Lights**

Are all navigation lights (Mast lights, Side lights, Stern light, Anchor light and Not under command light) in good working condition? Are all navigation lights fitted properly at the required angular sectors, as shown in the drawing of navigation lights arrangement?

[See additional info...\(p.16\)](#)

 **Railings and Cat Walks**

Are all railings and cat walks not corroded, holed, or wasted?

[See additional info...\(p.23\)](#)

 **Weathertight Doors**

Are all weathertight doors in good condition and secured correctly?

 **Winches, Capstans and Anchoring Devices**

Are all winches, capstans, and anchoring devices in good condition?

[See additional info...\(p.24\)](#)

[Back to TOC](#)

## Engine Room

**Auxiliary Engines**

Are all auxiliary engines in good working order?

**Cleanliness of Engine Room**

Are all tank tops and bilges clean? Are tools and equipment stored properly? Are emergency exits clear without any obstructions? Has it been confirmed that no oil leaks, deposits, or slicks are present anywhere?

[See additional info...\(p.24\)](#)

**EEBD**

Is the stowage condition of EEBDs in good order? Is proper air pressure maintained for each EEBD?

**Emergency Lighting**

Are all emergency lights in the engine room, engine control room, and escape trunk in good working condition? Are all light guards not damaged?

**Emergency Shut-off Valves**

Do the emergency shut-off valves on FO tanks operate properly?

[See additional info...\(p.25\)](#)

**Fire Doors**

Do the self-closing devices of fire doors work properly without hold-back hooks when self-closing doors are required in accordance with SOLAS requirements?

[See additional info...\(p.16\)](#)

**Fire Extinguishers**

Have all fire extinguishers been serviced as required and properly marked with the date of servicing?

**Fire Fighting Equipment**

Are all fireman's outfits in good condition and torches in good working order? Have all cylinders for breathing apparatus been properly serviced? Are onboard means of recharging breathing apparatus provided properly or a suitable number of spare cylinders available for use during drills?

**Fire Protection Materials and Cable Penetrations**

Is the insulation on "A" class bulkheads and decks in good condition? Are cable penetrations in "A" or "B" class divisions in good condition?

[See additional info...\(p.17\)](#)

**Fire Pumps**

Are all fire pumps in good working order with adequate pressure?

[See additional info...\(p.25\)](#)

 **Jacketed Piping System for High Pressure Fuel Lines**

Are high pressure fuel lines jacketed and spray shields in place, as required? Are leakage alarms in proper working order?

 **Lif jackets and Immersion Suits**

Are lif jackets and immersion suits in good condition? Are all lif jackets equipped with properly working lights and whistles?

 **Oil Filtering Equipment (Oily Water Separator)**

***One of top three detainable items by PSC***

Does the oil filtering equipment work properly? Are the casings of the oil filtering equipment and discharge line not corroded or wasted? Is the interior of the discharge lines clean, i.e. not oily or dirty? Has it been confirmed that no by-pass line has been fitted anywhere?

[See additional info...\(p.26\)](#)

 **Oil Record Book**

Is all maintenance work done for piping and the oil filtering equipment properly recorded in the oil record book?

 **Piping**

Has it been confirmed that all piping does not leak and is without any soft patches?

[See additional info...\(p.26\)](#)

 **Main Propulsion Engine**

Do all components of the main propulsion engine function correctly and properly?

 **Sewage Treatment Plant**

Is the sewage treatment plant in good working order?

Is an approved discharge rate table kept onboard in the case where untreated sewage that has been stored in holding tanks is discharged? (Refer to ClassNK Technical Information, No.TEC-0758.)

 **15 PPM Alarm Arrangement**

Does the 15 ppm alarm function properly, including automatic stopping devices, alarm, and gauges? Is an up-to-date effective calibration certificate kept onboard? (Applies to MEPC.107(49) equipment.)

[Back to TOC](#)



## Other Spaces

**Batteries**

Are the specific gravity of the acid, liquid level and terminal voltage of batteries sufficient?

**Emergency Lighting**

Are all emergency lights in good working condition?

**Emergency Generator**

Is the emergency generator able to be easily operated, connected to switchboard, and can it be started with primary and secondary means separately?

**Fixed Fire Extinguishing Installation**

Are bottles correctly serviced and dated? Are release mechanisms in good condition and in place? Is the fire protection system (fixed system or portable extinguisher) in the paint store in good working condition?

Are regular inspections/tests carried out and records thereof maintained properly?

[See additional info...\(p.27\)](#)

**Garbage and garbage management**

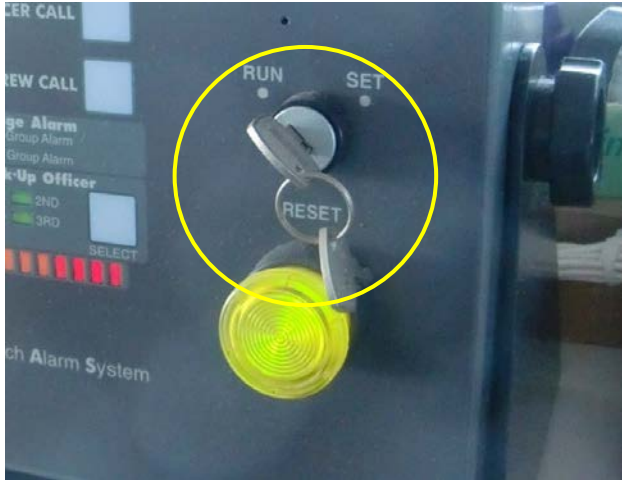
Is garbage stowed/disposed of properly? Is such stowage/disposal properly recorded in the garbage record book?

[See additional info...\(p.27\)](#)

[Back to TOC](#)

**BNWAS**

<BAD>

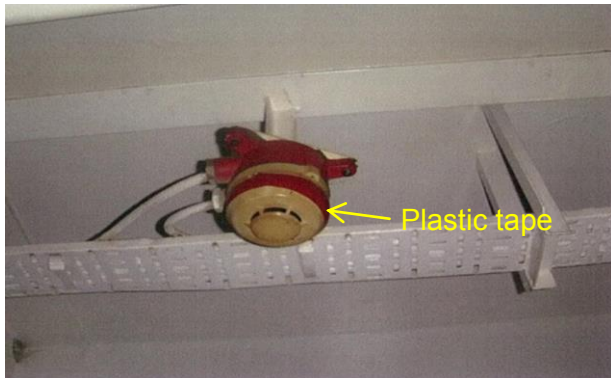


Keys left in BNWAS control board.  
(Not properly secured.)

[Back to Contents \(p.3\)](#)

**Fire Detection**

<BAD>



Fire detector held together with plastic tape.

<BAD>



Smoke detector covered by plastic bag.

[Back to Contents \(p.3\)](#)

### Navigation Lights

<BAD>



Signal light missing.

<BAD><GOOD>



Signal light installed improperly as anchor light. Correct masthead light is to cover a 225 degree arc of the horizon.

[Back to Contents \(p.3\)](#)

[Back to Contents \(p.11\)](#)

### Fire Doors

<BAD>



Unacceptable hold-back hook.

<BAD>



Worn-out and partially wasted fire door frame.

[Back to Contents \(p.5\)](#)

[Back to Contents \(p.12\)](#)

### Fire Protection Materials and Cable Penetrations

<BAD>



Deteriorated insulation on underside of deck.

<BAD>



Missing sealing material of cable penetration through deck.

[Back to Contents \(p.5\)](#)

[Back to Contents \(p.12\)](#)

### Fire Dampers

<BAD>



Fire damper flap wasted.

[Back to Contents \(p.7\)](#)

[Back to Contents \(p.10\)](#)

### Fire Fighting Equipment

<GOOD>



Properly fitted hose nozzle.

<BAD>



Hose nozzle missing.

[Back to Contents \(p.7\)](#)

[Back to Contents \(p.10\)](#)

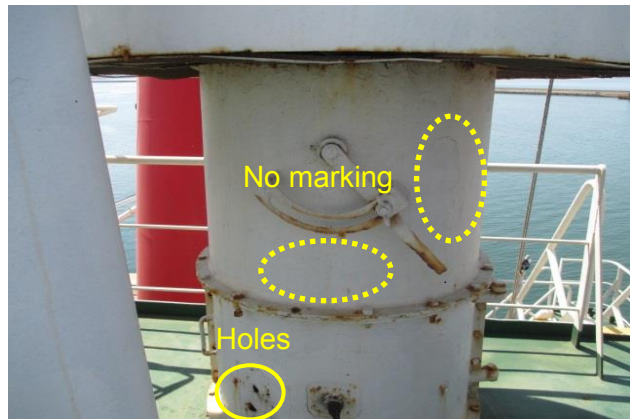
### Ventilators

<GOOD>



"Open-shut" positions clearly marked on ventilation trunk.

<BAD>



Holes in ventilation trunk and "Open-shut" positions not clearly marked.

[Back to Contents \(p.7\)](#)

## Emergency Lighting

<GOOD>



Emergency lighting at embarkation station in good condition.

[Back to Contents \(p.8\)](#)

## Lifeboats

<BAD>



View through lifeboat window unclear.

[Back to Contents \(p.8\)](#)

<BAD>



Retro-reflective tape deteriorated.

### Lifeboat Engine

<GOOD>



Lifeboat engine to be started with No.1 & 2 batteries separately.

[Back to Contents \(p.8\)](#)

### Lifeboat Inventory

<BAD>



Moldy and stained drinking water tank in lifeboat.

[Back to Contents \(p.8\)](#)

### On-load Release Gear

<GOOD>



Proper reset position.

<BAD>



Improper reset position.

[Back to Contents \(p.8\)](#)

### Accommodation ladders and Pilot transfer arrangements

<BAD>



Broken pilot ladder.

[Back to Contents \(p.10\)](#)



### Air Pipes and Ventilators

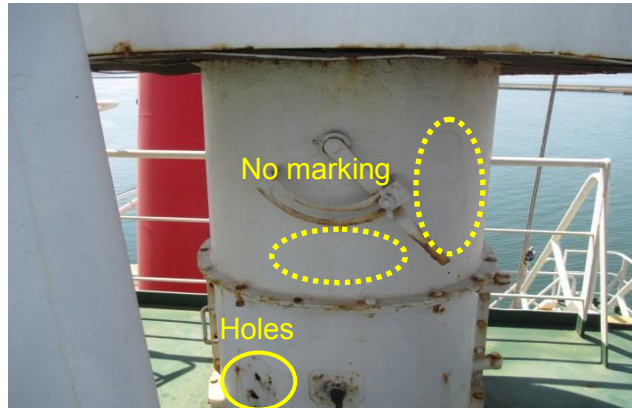
<BAD>



Bolt unfastened and air pipe head leaking oil.

[Back to Contents \(p.10\)](#)

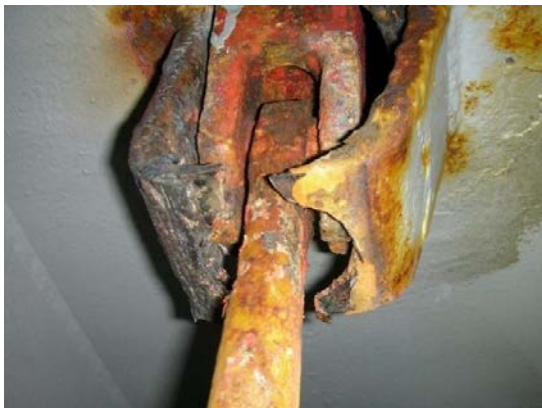
<BAD>



Holes in ventilation trunk and "Open-shut" positions not clearly marked.

### Cargo and Other Hatchways

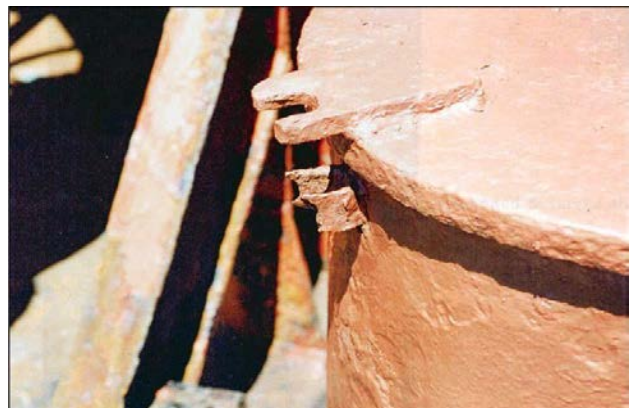
<BAD>



Hatch cover securing device wasted and badly corroded.

[Back to Contents \(p.10\)](#)

<BAD>



Hatchway securing device missing.

### Hatch Coamings and Bulwarks

<BAD>



Cracked hatch coaming end bracket.

[Back to Contents \(p.11\)](#)

### Railings and Cat Walks

<BAD>



Railing damaged.

<BAD>

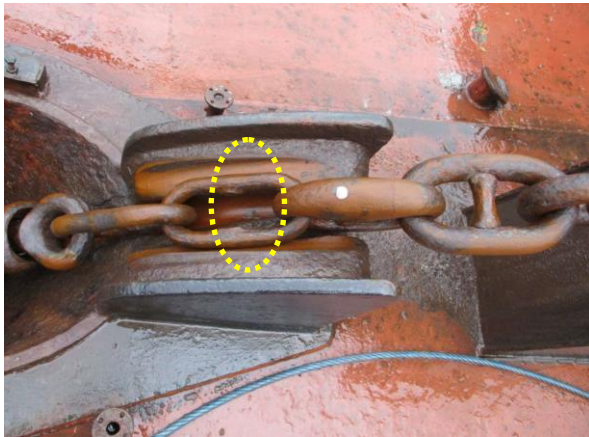


Catwalk cracked.

[Back to Contents \(p.11\)](#)

### Winches, Capstans and Anchoring Devices

<BAD>



Wasted common link with stud lost.

<BAD>



Poorly maintained windlass brake.

[Back to Contents \(p.11\)](#)

### Cleanliness of Engine Room

<BAD>



Tank top of engine room oily.

[Back to Contents \(p.12\)](#)

## Emergency Shut-off Valves

<BAD>



Valves improperly secured by wire.

[Back to Contents \(p.12\)](#)

## Fire Pumps

<GOOD>

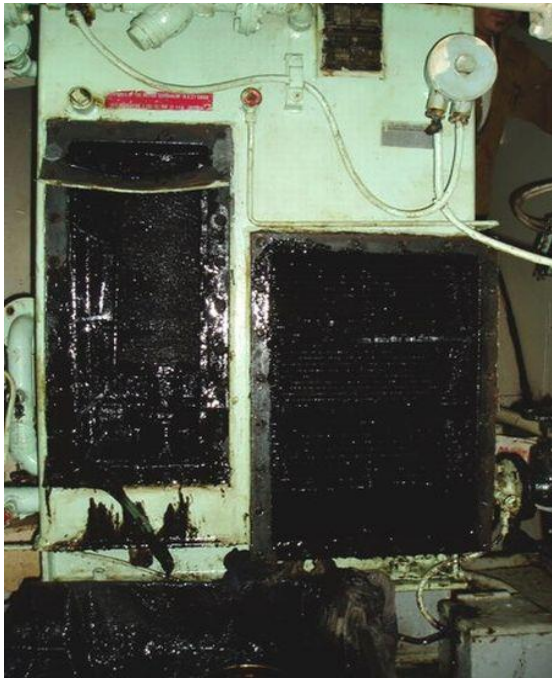


Adequate water pressure during fire pump hose test.

[Back to Contents \(p.13\)](#)

**Oil Filtering Equipment (Oily Water Separator)**

<BAD>



Oily water separator clogged.

[Back to Contents \(p.13\)](#)

**Piping**

<BAD>



Badly corroded and leaking piping.

[Back to Contents \(p.13\)](#)

<BAD>



Pipe temporarily repaired with rubber patch.

### Fixed Fire Extinguishing Installation

<GOOD>



Water supply valve always left open.  
(Fixed Local Application Fire-Fighting Systems)

<BAD>



Pilot lines for control of CO2 discharge disconnected.  
(Fixed CO2 Fire-Extinguishing System)

[Back to Contents \(p.14\)](#)

### Garbage and Garbage Management

<BAD>



Garbage drum worn out.

[Back to Contents \(p.14\)](#)



**ARRIVAL CHECKLIST  
for Port State Control**

**NIPPON KAIJI KYOKAI**

4-7 Kioi-cho, Chiyoda-ku, Tokyo 102-8567, Japan  
Tel: +81-3-5226-2027 FAX: +81-3-5226-2029  
e-mail: [svd@classnk.or.jp](mailto:svd@classnk.or.jp) (Survey Department)

December 2017